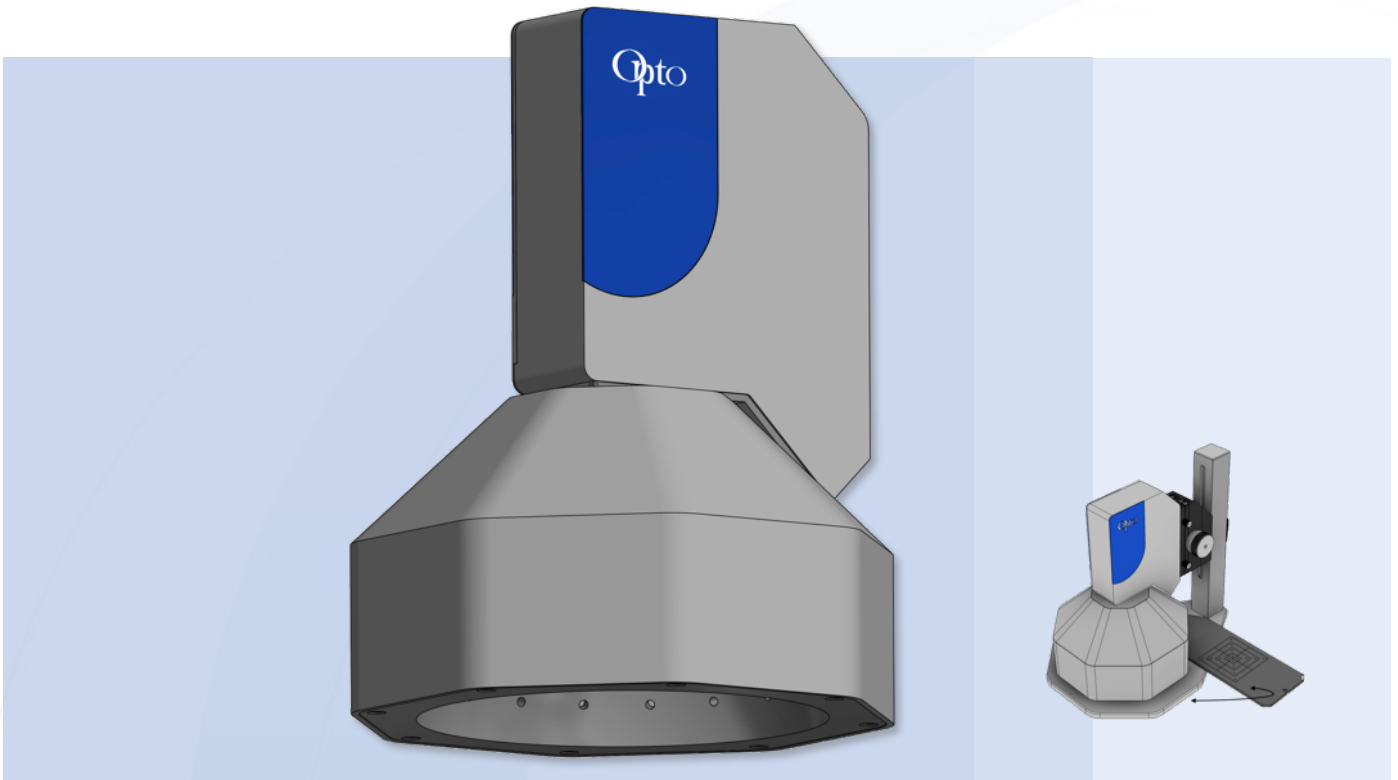


solino®

Bidirectional Reflection Distribution Function (BRDF) measurement



Specification

Item number	System Mag. [x]	FoV [mm]	WD [mm]	Sensor [MP]	Object Space Resolution [µm/Px]	DoF [mm]	Image	Interface	Light [64 LED]
IS10-00218CU6101 (solino 50x50)	0.24	50.6 x 50.6	5	20	11.3	2.50	Colour	USB 3.2, Gen1	Dome
IS10-00318CU6101 (solino 25x25)	0.46	25.6 x 25.6	5	20	5.9	0.50	Colour	USB 3.2, Gen1	Dome
IS10-04718CU6101 (solino 10x10)	1	12.3 x 12.3	5	20	2.7	0.35	Colour	USB 3.2, Gen1	Dome

solinoStudio software and SDK included

Dimensions [mm] (W x L x H): 206 x 206 x 280.9

CE / RoHS / WEEE-Reg.-No. DE 68564667

optional

IM-AM-00006	solino Stand
IM-AE-00010	solino Power Supply Package EU
050-8Z1AD00223	USB cable, USB-C straight to USB-A, screwable, 1m
050-8Z1AD00224	USB cable, USB-C straight to USB-A, screwable, 3m

Technical Drawing

